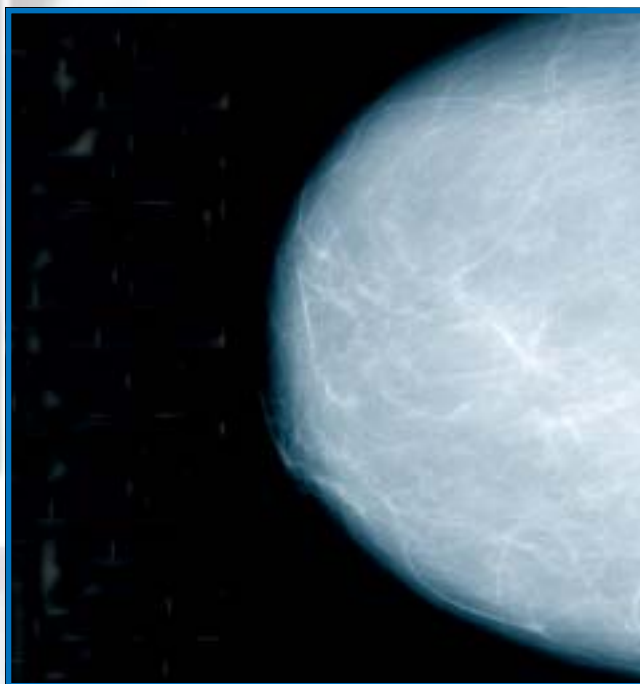
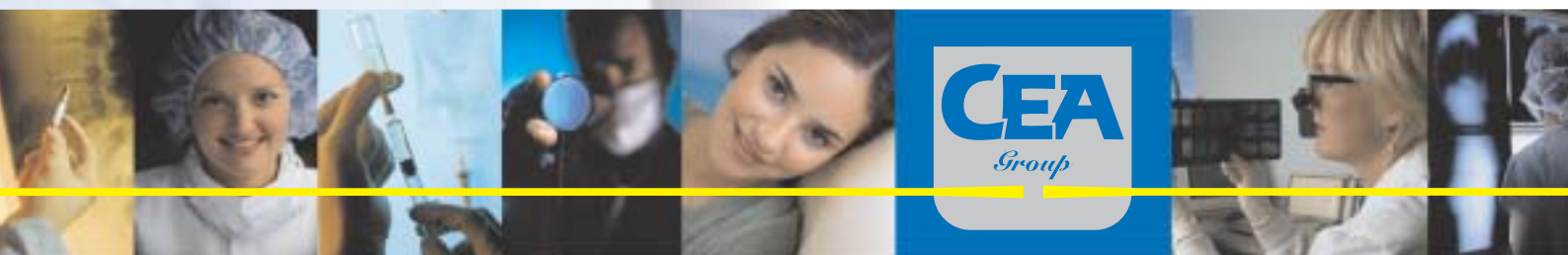


CEA Mammography System



CEA Mammography Film/Screen System

- Improved contrast and extremely high resolution and sharpness with CEA film/screen combination
- Excellent image quality at low dose
- Enhanced consistency in variable processing conditions
- Bluer image tint for more brilliant images
- More diagnostic information and low absorption with CEA mammography cassettes
- Optimized speed/resolution with a new matched film/screen combination



THE SWEDISH ALTERNATIVE

CEA MA NEW Mammography Film

General description

CEA MA NEW is a single-coated orthochromatic film with high contrast dedicated for mammography. It provides images with high speed/low dose, high contrast, high resolution and low noise.

The film is based on the Cubic Crystal technology that gives uniform silverbromide crystals with homogenous dimensions. This leads to a high image quality with minimal influence of processing variations that may be experienced in daily processing environment.

CEA MA NEW also produces excellent visualization of bone details when used for bone skeleton examination.

Product benefits

- **Low dose to the patient**
High sensitivity and optimized signal to noise ratio minimize the dose to the patient.
- **High contrast**
High contrast provides excellent visualization of micro details and low-contrast structures.
- **Consistent high image quality**
The uniform silver grain crystals result in images that are hardly affected by normal fluctuations in processing conditions.
- **Brilliant images**
The blue image tint of the polyester base makes the images more comfortable to look at and reduces the eye fatigue.

Processing

CEA MA NEW offers increased physical and chemical stability, allowing film processing also at higher temperatures. CEA MA NEW is designed to be processed in a 90 seconds cycle processor, but extended cycle processing is possible when appropriate. The film can be processed in the same processing cycle as most conventional double-coated X-ray films. Optimum processing conditions are achieved in CEA chemicals.

Darkroom handling

Standard safelight filter for orthochromatic films, mounted in an appropriate housing is recommended. We recommend EncapSulite Darkroom Safelights, Type R20 Red. Conventional filters, like GBX-2 or Wratten No 1 may also be used.

Film storage and darkroom handling

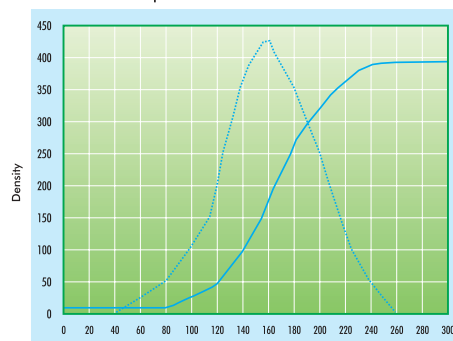
Storage at 10-22° C and 30-50% relative humidity is recommended. Film boxes should always be shielded from X-rays and other penetrating radiation.

Screen recommendation

For optimal image with respect to speed/resolution, CEA mammography screens and cassettes are recommended.

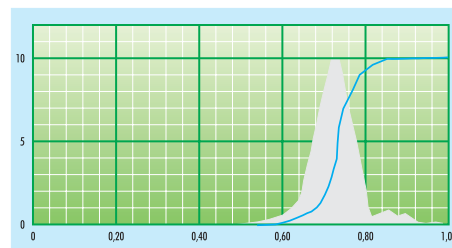
Sensitometric and contrast curve

The sensitometric curve for CEA MA developed in CEAROLL developer at 90 s at 34° C



Grain size distribution

The homogenous grain size distribution contributes to a high contrast and low noise. The grain size is largely concentrated around 0,7 μm (700 nanometers).



CEA Mammography Screens

General description

CEA mammography screens are orthochromatic green light emitting screens, designed for mammography applications. They contribute to a high definition where the smallest details and clinically significant information throughout the breast image are sharply visualized.

CEA mammography screens are provided in two speed classes:

- Mammo M200, to be used where extremely high resolution is of greatest importance. The lower speed requires higher exposure doses.
- Mammo M300, to be used when high speed is important to save doses to the patient. The optimized resolution properties makes this screen an excellent choice for general mammography applications and mammography screening.

Recommendations

Protect CEA mammography screens from humidity. Do not expose to sunlight or ultraviolet rays. Otherwise, screens may change colour or warp. Remove dust and stains from the screens immediately. Use CEA Screen Cleaner to clean mammography screens. Moisten a piece of cloth with the cleaner. Gently wipe the screen surface. After cleaning, dry the screen with a clean piece of cloth. Leave the cassette open in order to allow it to dry before reloading the film. The screen cleaning cloth can be used to remove dust from the screen intermediately without screen cleaner. It is recommended to clean the screens regularly each week for optimal image quality.

Sizes

CEA mammography screens and cassettes can be delivered in the sizes of 18x24 cm and 24x30 cm.

CEA Mammography Cassettes

New light-weight plastic material

CEA mammography cassettes combine features like reliability, durability, comfort and minimum weight in one cassette. The new plastic material, Novodur®, is an extremely tough and light-weight material. The cassette is long-lasting and shockproof and gives excellent diagnostic results.

Shockproof design

The CEA mammography cassettes are constructed to have a long life-length, a careful design and rubber corners to absorb shocks.

More diagnostic information

More diagnostic information can be achieved by the design of the cassette, where the edge of the screen and film are in close contact with the thorax. The film slides close to the thorax when closing the cassette lid. The distance between the edges of the film and the thorax side of the cassette can thus be limited to less than 2 mm.

Perfect film/screen contact

The special designed foam rubber provides greater pressure during the first seconds after closing the cassette thus obtaining perfect contact between film and screen. The pneumatic properties of the rubber make the extraction of air so fast that you can use the cassette practically immediately after closing it. Gentle pressure on the spot indicated on the cover is sufficient to ensure perfect light-proof closing. Accidental opening is impossible.

User-friendly

The cassette's tube side and back are easily recognizable, guaranteeing the correct use of the cassette at all times. The cassettes can be delivered with US or EU identification window.





NOTIFIED BODY NO. 0402



CEA AB is ISO 9001:2000 certified

THE SWEDISH ALTERNATIVE

CEA AB

Mästarvägen 7
SE-645 41 Strängnäs, Sweden
Tel: +46 (0)152-227 00
Fax: +46 (0)152-156 65
www.cea.se
info@cea.se

CEA (Deutschland) GmbH

Basedowstrasse 2-8
DE-20537 Hamburg, Germany
Tel: +49(0)40-253 05 60
Fax: +49(0)40-253 05 627
www.cea-deutschland.de
info@cea-deutschland.de

Sold by: